



A Pre-Qualification Document

INTERIORS AND ARCHITECTURE

Rasme Engineering Services Pvt. Ltd.

2024

*. * We have upgraded as Rasme Engineering Pvt. Ltd from Rasme Consultancy

www.rasmeconsultancy.com

EDGE & LEED CERTIFIED ARCHITECTS

Content:

- 0 Introduction
- 0 Establishment
- 0 Our Goal and Mission
- 0 Our Vision
- 0 Our Presence
- 0 Services Offered
- 0 Quality Assurance
- 0 Methodology
- 0 Organization Chart
- 0 Key Personnel
- 0 Selected Projects
- 0 Selected Clientele
- 0 Numbers at a Glance
- 0 Contact Us





Introduction:

RES PL is **RASME** (Retail Architecture Service Management Establishment) Engineering Services PVT Ltd.

RESPL provides Interior, Architecture Design and Project Management consultancy with Professional touch of Engineering, Interiors and Project Management team members.

The company umbrage despite being young has as its constituent members, the technical and conceptual brain trust of the organization who are all highly educated professionals with vast experience in handling diverse projects. The experts in various disciplines of the industry ably support our staff.

RESPL Interiors, are conceptualised and developed by maintaining close working relationships with clients, ensuring their vision for interior environments. Our team of spatial, interior & product designers works alongside the client, expanding on spatial concepts and themes for space management, Zoning, Lighting, ambience, and furniture. Using a variety of software including CAD and 3D applications, we meticulously plan the arrangement of spaces, focusing on both form and function. The result is a livable environment that blends the taste and requirements of its occupants with RASME's signature; high standard of quality in design and production.

RESPL Architecture, Building on a strong foundation of meticulously designed furniture and luxurious interiors, RASME Architecture continues to expand upon the RASME brand, retaining the classically influenced aesthetics and exceptional attention to detail that are at the core of all RASME projects. Initially focusing on residential architecture, our aim was to combine the grandeur of quintessential European styling with functional and well-thought out spaces, creating palatial domestic environments within a livable scale. Today we welcome projects from the residential, commercial and hospitality sectors. Addressing each project anew, focusing on its unique context within its environment. **Landscape design** is an integral part of the design surroundings and is incorporated in all our Master Planning and built environments.

RESPL Project Management. As a Project Manager, one of our jobs is to plan your project in detail. Using the Project Planner, we create a detailed task list, schedule the start and end dates of tasks and add links between them. The RASME then helps you to baseline your project. Using the Project Planner, you can assign durations and allocate resources to ensure that the right tasks are completed at the right time, by the right people. RASME delivers quality and precision within the timelines

Establishment:

Founded in 2007, RASME has emerged as one of the fastest growing Architecture and Interior Design Firms in GCC and India. Our integrated service model offers the best practice model in the industry and helps engaging our clients & users on a long term relation.

RASME started its operations at Bangalore in the year 2007 and it took no time to establish a **full** fledged office and services in Dubai. Bangalore office serves as Head Quarter for India Operations.

RASME has grown to a young and creative group of 30+ technically qualified people consisting of Architects, Designers, Graphic Designer, Project Managers, Strategic Planners and Master Planners.





RESPL is committed to achieve excellence in every aspect of delivering interior solutions. We strive to create environments that inspire, empower and revolutionize lives, workplaces and recreations of humanity. We aim to contribute significant value, not only to our clients but also to our employees and our community, through continual innovation, sustainable development and global best practice.

while establishing a strong network of trades-people, builders and fabricators who share our vision. We endeavor to combine our creativity for design with our desire to help others enjoy life more through our strong commitment to the environment.

Our Goal and Mission:

PROFESSIONALISM:

We are committed to the highest standards of professionalism, we pursue innovation, we deploy imagination, we are open to new ideas and we act decisively and consistently. We are determined to deliver outstanding quality for each and every project.

ACCOUNTABILITY:

Our corporate culture encourages all team members to take ownership over their roles and to become an integral part of the system and process that deliver excellence.

INTEGRITY:

Our commitment to integrity is a cornerstone of our past, present and future success. This drives our dedication to uphold ourselves to the highest standards of business conduct.

COMMITMENT:

We are persistent with a purpose in giving our client, supplier and fellow workers our total focus. We work to achieve continuous improvement in our processes and products through a commitment to quality principles and ensure quality in every customer interaction.

Our Vision:

TRUST - is the mutual respect for people. Trust recognizes the importance of individuals & appreciates their diverse opinions. Trust encourages us to be creative with new vision and ideas.

CONFIDENCE - Self-confident people take initiative, handle the unexpected & support the efforts of others. They take bold, innovative, creative actions, capitalize on opportunities, make sound decisions.

TEAMWORK - is personal involvement & collaboration in a team environment. It includes setting a common goal in support of business objectives, making an individual commitment to the team's success and recognizing the success of the team.

ACCOUNTABILITY - Being accountable means every employee assumes ownership and responsibility for his or her own work, regardless of the job they perform. Being accountable means making decisions and holding oneself responsible for the consequences of those timely decisions, actions and choices.

COLLABORATION - We believe in collaborating at work and there by deliver highly creative & quality services. We collaborate with clients, inter office staff with use of high end technology allowing us to learn, share and transfer knowledge.





Our Presence:

RESPL operates from Bangalore in India and caters to Middle East region from Dubai.

Bangalore office caters to the demand across the Country like Mumbai, Chennai, Hyderabad, Goa, Mumbai, Calcutta, Patna, Punjab, Delhi NCR and Pune with temporary delivery offices at each location while main support and back end services are rendered through the Bangalore Head Quarter.

Dubai office caters to the growing needs of Middle East Region and all other overseas requirements.



Services Offered:

RESPL delivers Design & Build Interior services and consultation to a variety of clientele across the GCC and India. We offer a broad selection of specialized services including interior design, fit-out, furnishing. These services add up to a comprehensive turn-key Design and Build solution.

We offer services to the following markets:

Corporate End Users

Retailers

Residential End Users

Hospitality End Users

Automobile Sector

Bank Sector

Healthcare

Office

Industry

Urban design

Entertainment Sector

Landscape Design

RESPL offers global best practices solutions in relation to the design and build of interiors, managed through a project management framework that mitigates time frame and budget risk for the client. Our design services range from LEED accredited creative design, incorporating the latest in system furniture through to custom made furniture. RASME's proven track record of delivering excellence to our enviable list of clients is the result of rigorously tested business model built around global best practices.



Services at a glance:

Architecture
Interior Designing
Product Designing
Research & Studies
Strategic Planning
Brand Building
Furniture Solutions
HR Solutions
Design & Build



Quality Assurance:

Quality Assurance is about safeguarding the client's interest, by understanding "local and global" values & goals, assuring that all the spaces and the designs are of highest standard that meets clients global objectives.

Quality Assurance is both a state of mind and an understanding of the regulations & guidance relating to the development as formulated by the local regulatory authorities.

In practice, Quality Assurance is applied at various levels and stages such as conceptual stage, space planning & zoning, detailing, construction details, project management, documentation, communication documents (client, vendor and consultants) which goes right up to handing over of a project. We, at **RESPL believes in QUALITY** unlike our competitors who believe in quantity, needless to say that we stand tall and apart ...

Key Personnel _ Management:



Manjunath Sabanis

Director

Manjunath Sabanis founder and Director of RASME, he looks after India, Dubai & overseas operations. He has 25+ years vast experience from various fields of Architecture while his strengths are Retail, Corporate, Hospitals & Pharma Industry.

His expertise in architecture process is rooted in a philosophy we call 'inside-out design'. It's an approach that starts with the 'inside' needs of the company, i.e. the needs of our people and the objectives of your business. This resulted RASME form tailored to our clients current and future needs.

Our Team

WE delivers Design & Build Architecture & Interior services consultation to a variety of clientele across the GCC and India. We offer a broad selection of specialized services including interior design, fit-out, furnishing.



ABOUT PROJECTS

RESPL, the name is synonymous with **RETAIL INTERIORS**. Whether it be designing of retail spaces or its execution, **RESPL** has been offering end to end services and creating great retail customer experiences for over 14 years covering over **One million sq ft** floor area. **RASME** has dedicated teams to cater to every aspect of Retail services offered. **RASME**'s clientele include national and international names such as The Collective, Hackett, Samsung, Kaya, Sephora to name a few.

We at **RESPL** believe that, beyond just creating a good-looking store with aesthetically pleasing displays, retail store design is a well-thought-out strategy to set up a store in a certain way to optimize space and sales. The way a store is set up can help establish brand identity. We constantly monitor market trends and adapt their facilities to meet the ever changing, construction and commercial interior market,

We strive to provide the complete package with visually stimulating, appealing & optimal designs with precise and accurate construction project management programming and cost control.

RESPL also offers & delves into many **other aspects** of Retail stores like strategic inputs in location analysis & selection Branding, Fixture design, creative new Brand designs.

RESPL also provides spatial and design solutions for other segments like Commercial, Corporate, Retail, Healthcare and Niche Residential Interior as well as Architecture projects, Landscape Architecture & Master Planning. It comprises a team of dedicated and talented Architects, Interior Designers, Landscape designers and Project Managers, with offices located in India and the UAE.



Selected Projects:

THE OXFORD MEDICAL COLLEGE, HOSPITAL & RESEARCH CENTRE-SKILL AND SIMULATION LAB



Selected Projects:

SRINIVASA INSTITUTE OF DENTAL SCIENCES @ MUKKA NEAR MANGALORE - DENTAL COLLEGE



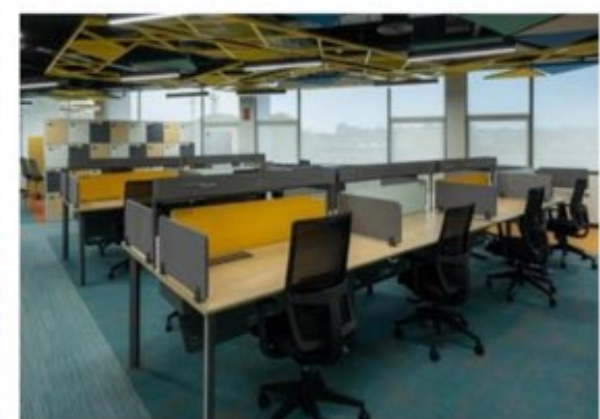
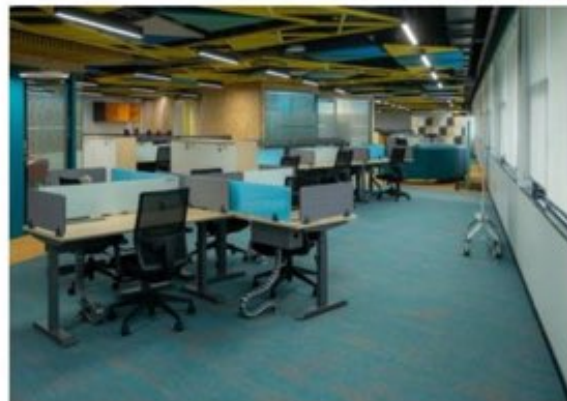
Selected Projects:

SRINIVASA INSTITUTE OF DENTAL SCIENCES @ MUKKA NEAR MANGALORE - AUDITORIUM



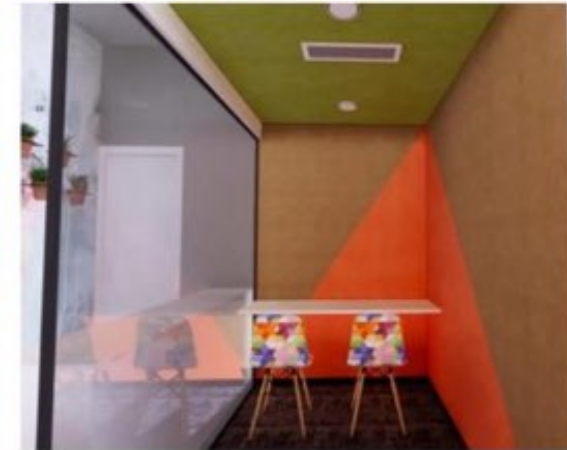
Selected Projects:

BOSCH 303, OFFICE- (BENGALURU) - COMPLETED SITE PICS



Selected Projects:

BOSCH 209, OFFICE- (BENGALURU) - 3D IMAGES



Selected Projects:

BOSCH 209, OFFICE- (BENGALURU) - COMPLETED SITE PICS



BOSCH OFFICE- (PUNE) - COMPLETED SITE PICS

Selected Projects:



Selected Projects:

BOSCH 101, BOARD ROOM- (BENGALURU)- COMPLETED SITE PICS



Selected Projects:

BOSCH 101, OFFICE- (BENGALURU) - 3D IMAGES



Selected Projects:

BOSCH 101, OFFICE- (BENGALURU) - COMPLETED SITE PICS



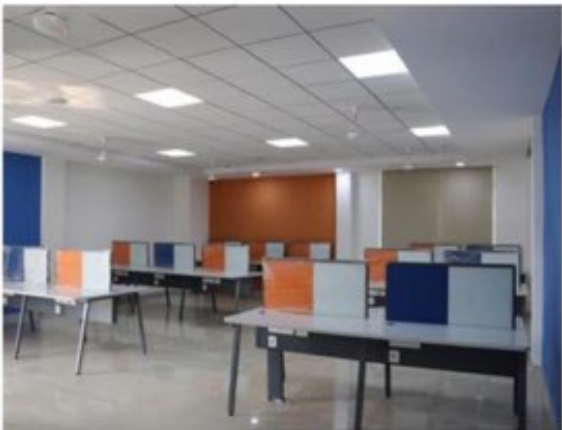
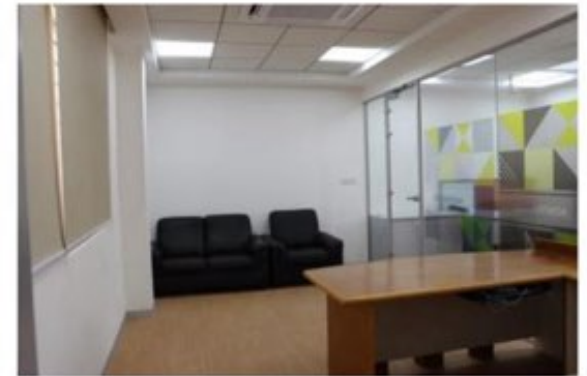
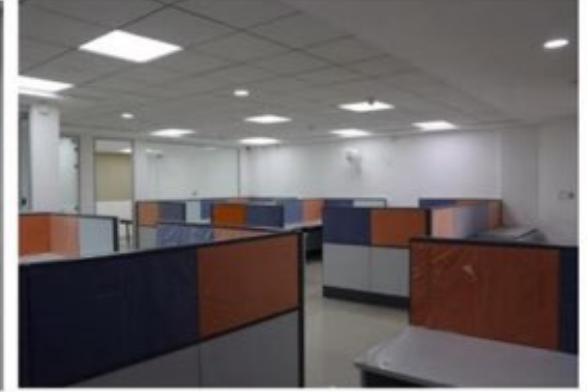
Selected Projects:

BOSCH OFFICE- 519 (BENGALURU) - COMPLETED SITE PICS



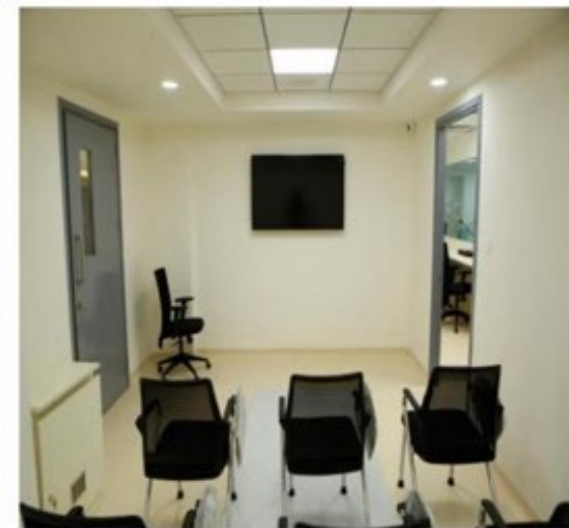
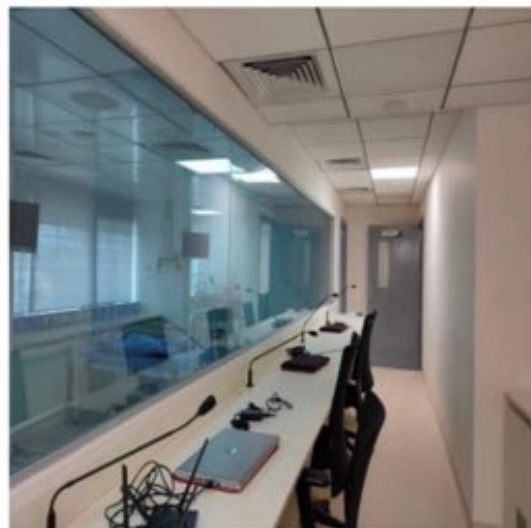
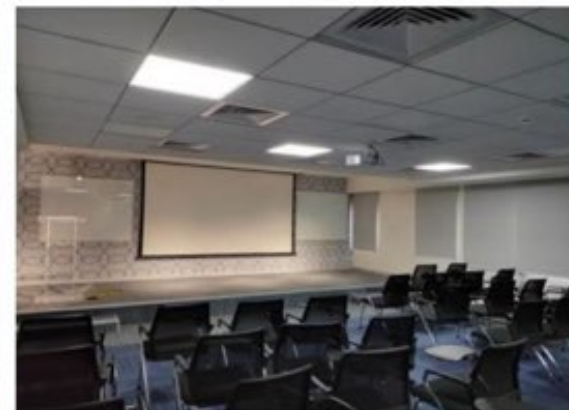
Selected Projects:

VC OFFICE FLOOR @ JSS SCIENCE & TECHNOLOGY UNIVERSITY- (MYSURU) - COMPLETED



Selected Projects:

JSS AHER, SIMULATION CLINIC- (MYSURU) - COMPLETED



Selected Projects:

JSS HOSPITAL - LOBBY DISPLAY (MYSURU) - 3D & COMPLETED SITE IMAGES



JSS CAMPUS (MYSURU) DESIGN:



JSSSTU CAMPUS

PROPOSAL FOR ENTRANCE GATE, AUDITORIUM, ADMINISTRATION AND ACADEMIC BLOCK,
BOYS HOSTEL, GIRLS HOSTEL, STEP BUILDING AND SWIMMING POOL.

Selected Projects:
JSS CAMPUS (MYSURU) BLOCKS- AUDITORIUM, ADMIN, ACADEMIC, CO-WORK OFFICE, HOSTELS



MVJ HOSPITAL CAMPUS@ HOSKOTE



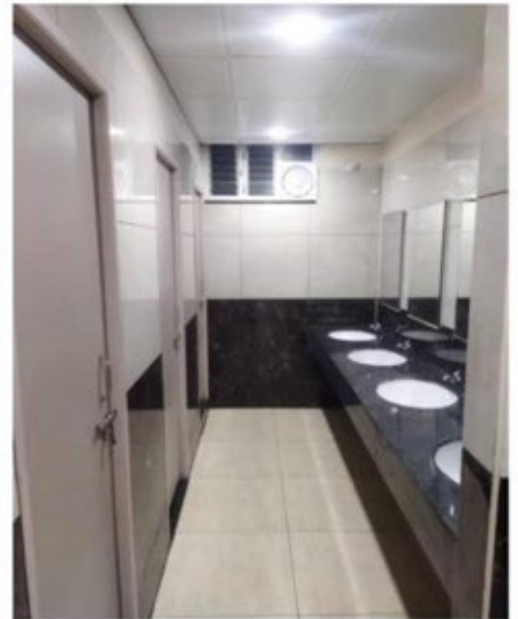
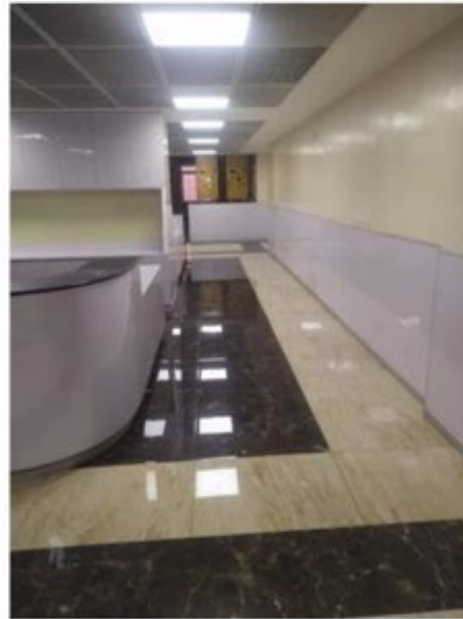
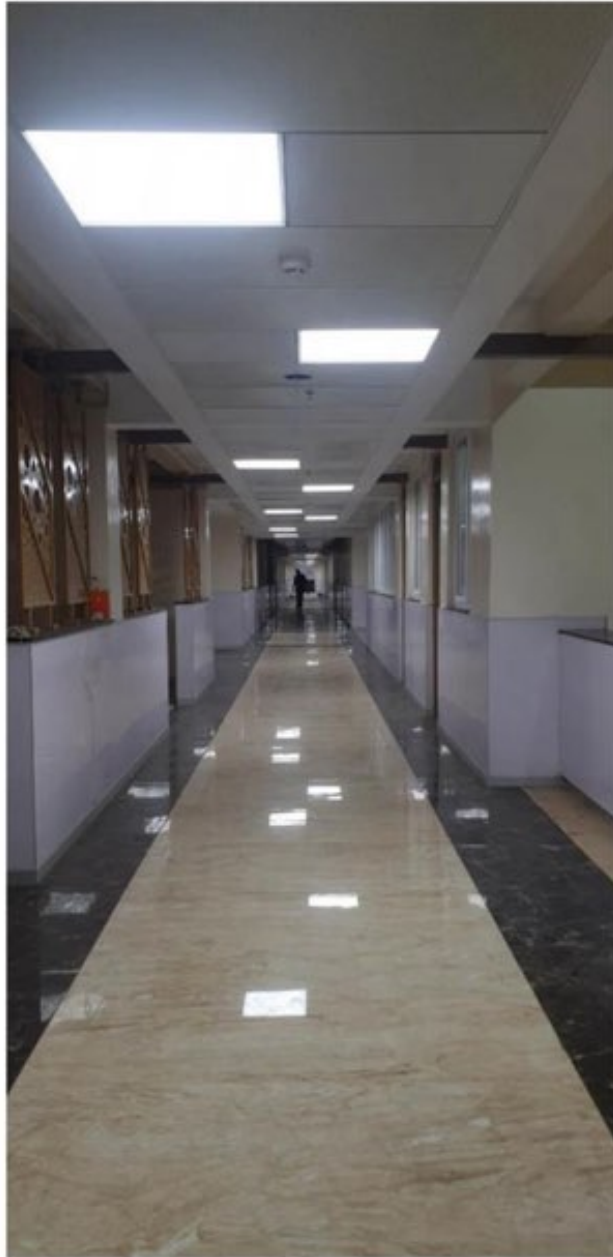
Selected Projects:

MVJ HOSPITAL CAMPUS@ HOSKOTE



Selected Projects:

MVJ HOSPITAL - 2NP FLOOR, BENGALURU - COMPLETED



Selected Projects:

MVJ INTERNATIONAL SCHOOL @ BANGALORE -AUDITORIUM



KBN HOSPITAL CAMPUS (GULBARGA)

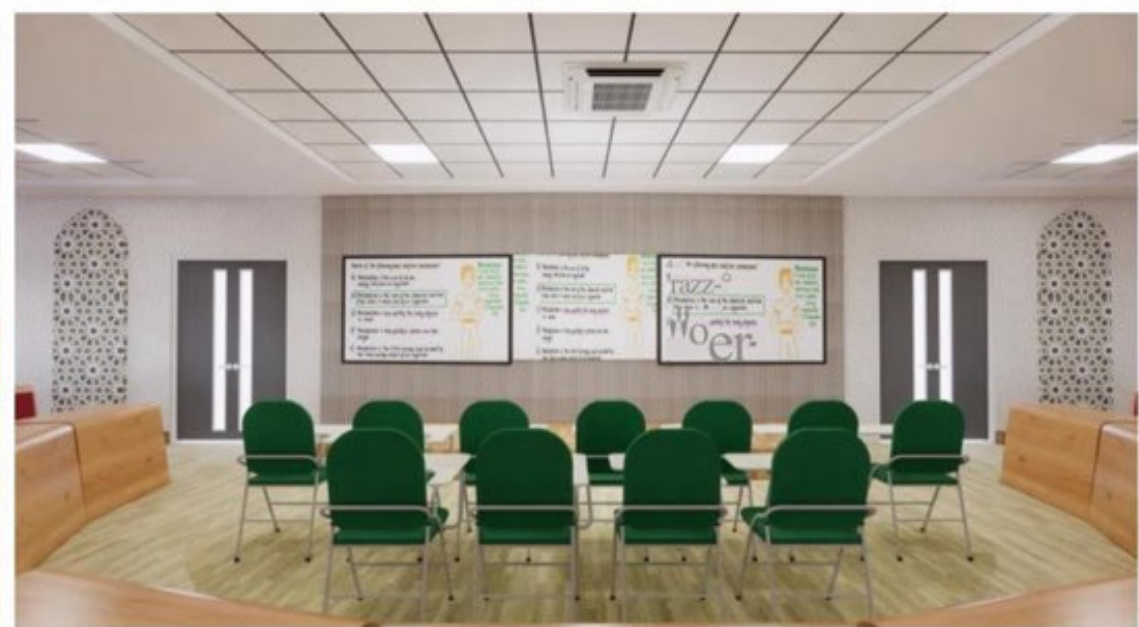
Selected Projects:



Selected Projects:
KBN TEACHING CAMPUS (GULBARGA) - BOARD ROOM

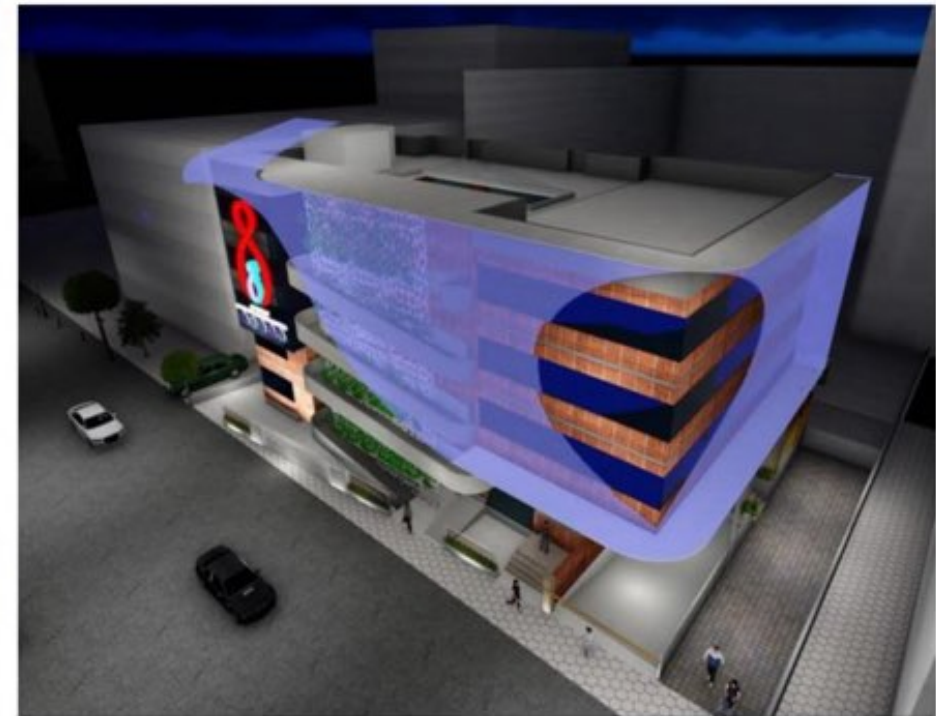


Selected Projects:
KBN TEACHING CAMPUS (GULBARGA) - CLASSROOM



Selected Projects:

KALBURGI WOMEN AND CHILDREN'S HOSPITAL - SITE WORK IN PROGRESS



Selected Projects:

DR. AJAY'S COMMERCIAL COMPLEX - SITE WORK IN PROGRESS



NETRA TECH PARK- BENGALURU

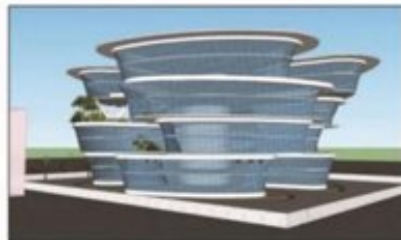
Selected Projects:

PROPOSED SITE PLAN



Area Statement:

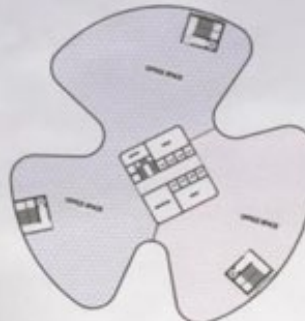
- Site area - 8093 sqm
- Total no of floors - G+9(b-2)
- Area of service floor - 250 sqm
- Area of workspace per floor
 1. GF & 1ST - 2642 sqm
 2. 2nd & 3rd - 3910 sqm
 3. 4th, 5th & 6th - 2292 sqm
 4. 7th, 8th & 9th - 382 sqm
- Total built up area - 27526 sqm
- Floor space index - 3.4
- Total height - 42 m
- Car parking - 420 nos. (approx)



planform three petal shape- which gives proper accessibility from center service to all office spaces



Typical GF & FF
3 Tenants



Typical SF, & TF
2 Tenants



Typical 5TH, 6TH & 7TH
1 Tenant



Climate responsive building orientation- all three sides gets partial winds & south and west will be solid so reduce heat from sun radiation



B E Y C J N D THE LIMITS

Deconstructivism is a movement of post-modern architecture. It gives the impression of the fragmentation of the constructed building, commonly characterised by an absence of obvious harmony, continuity, or symmetry.

Design characteristic

- unrelated forms.
- abstract nature.
- no symmetry.
- control forms & shapes.
- visuals surreal & iconic.

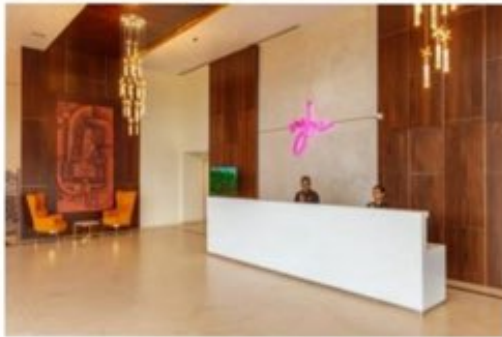
Besides fragmentation, deconstructivism manipulates the structure's surface, skin and shape, which are pushed, distorted, and dislocated architecture.

PROPOSED IT COMPLEX
DESIGN FOR NETHRA
TECH PARK, BANGLORE



Selected Projects:

VYBE-3 STAR HOTEL @ BIDAR, KARNATAKA – COMPLETED SITE IMAGES



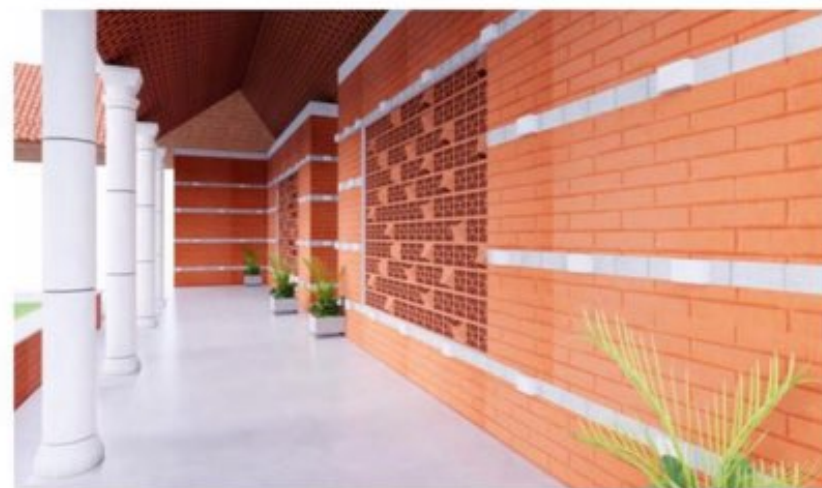
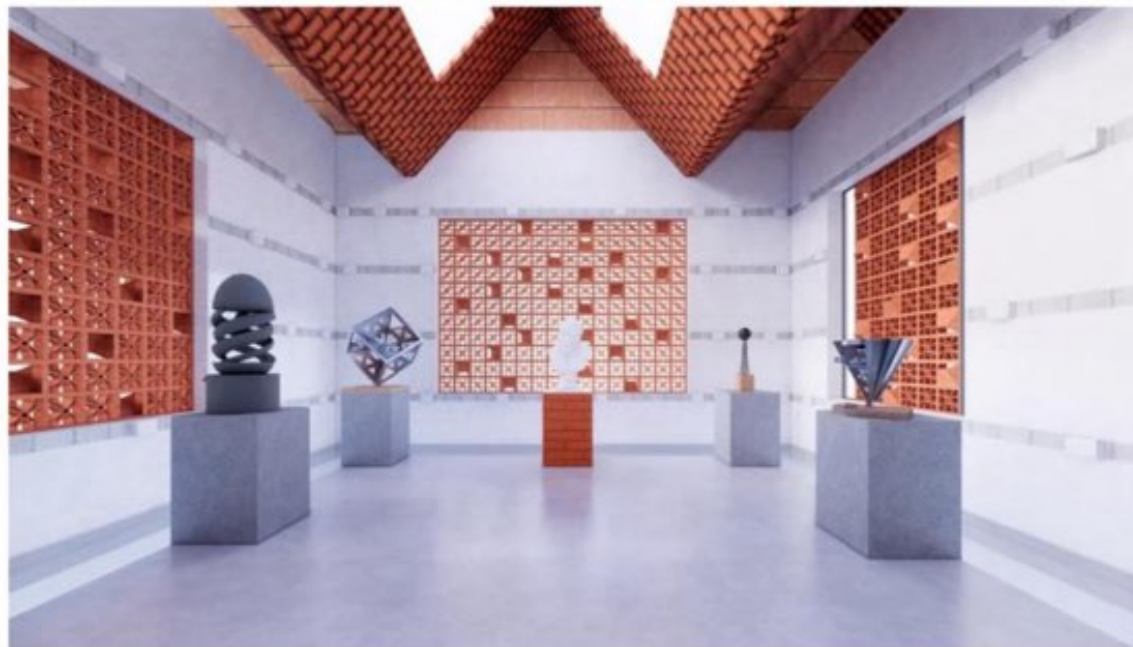
Selected Projects:

AUDITORIUM @ BIDAR, KARNATAKA - EXTERIOR & INTERIOR-COMPLETED SITE PICS



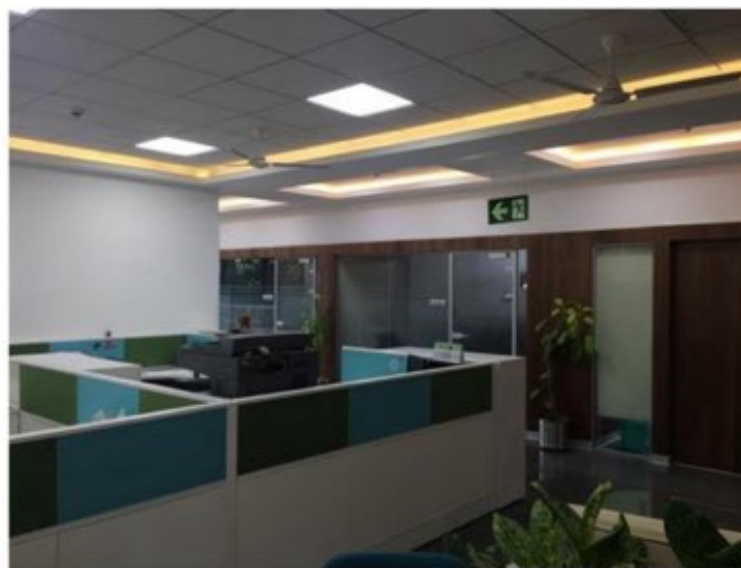
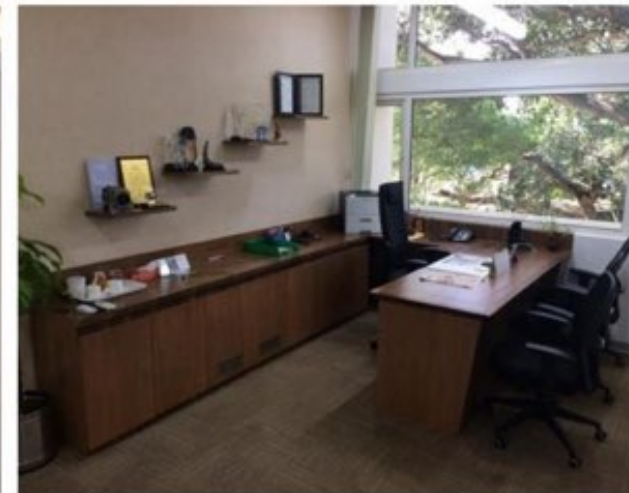
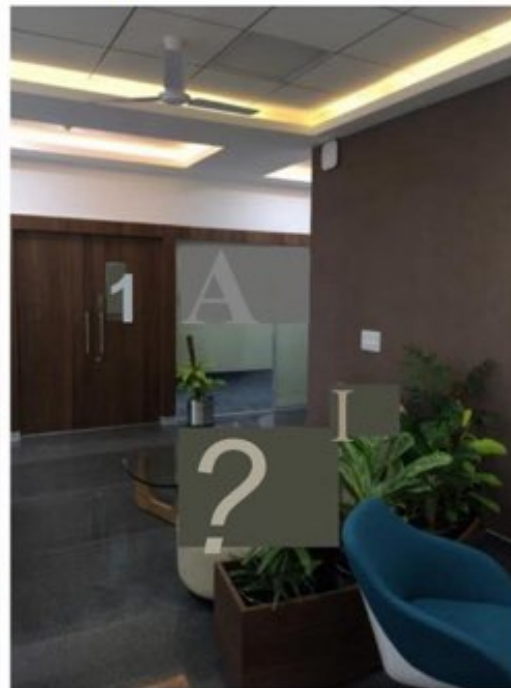
Selected Projects:

RAMANA MAHARSHI ASHRAM - HOSUR ROAD, BANGALORE



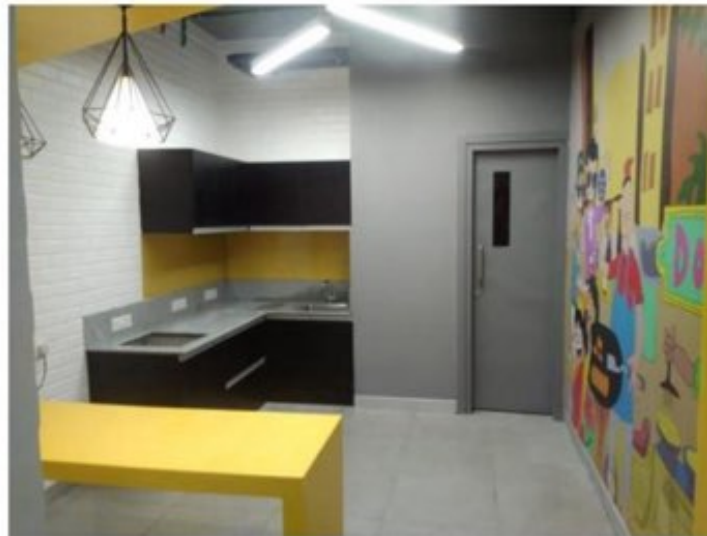
Selected Projects:

SEG OFFICE- (BANGALORE- NAGANATHAPURA) - SITE PHOTOS



Selected Projects:

BOSCH ADUGODI, BENGALURU – TCI BUILDING- SITE PHOTOS



Selected Projects:

BIAL - BOARD ROOM VIEWS - COMPLETED - PICS
SITE



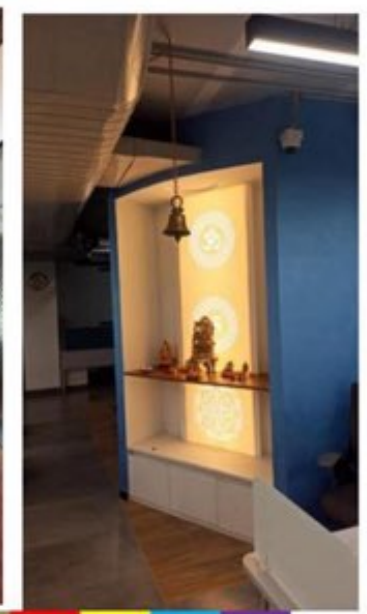
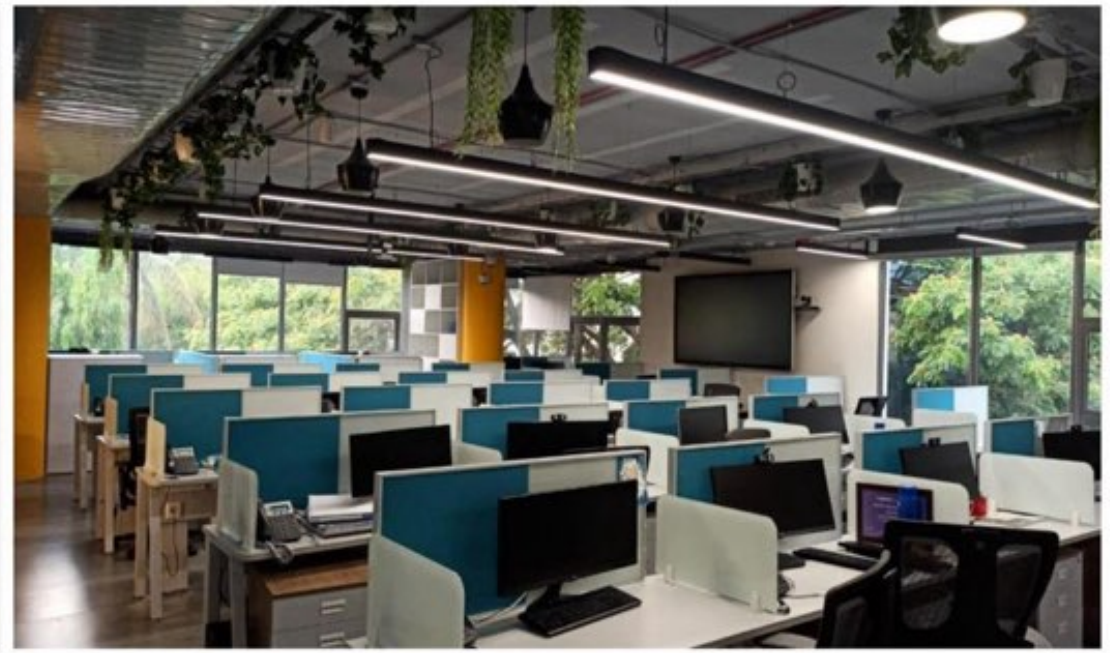
Selected Projects:

BIAL - RECEPTION VIEWS - COMPLETED - SITE PICS



Selected Projects:

RESURGENT- OFFICE AT INDRANAGAR, BENGALURU - COMPLETED SITE PHOTOS

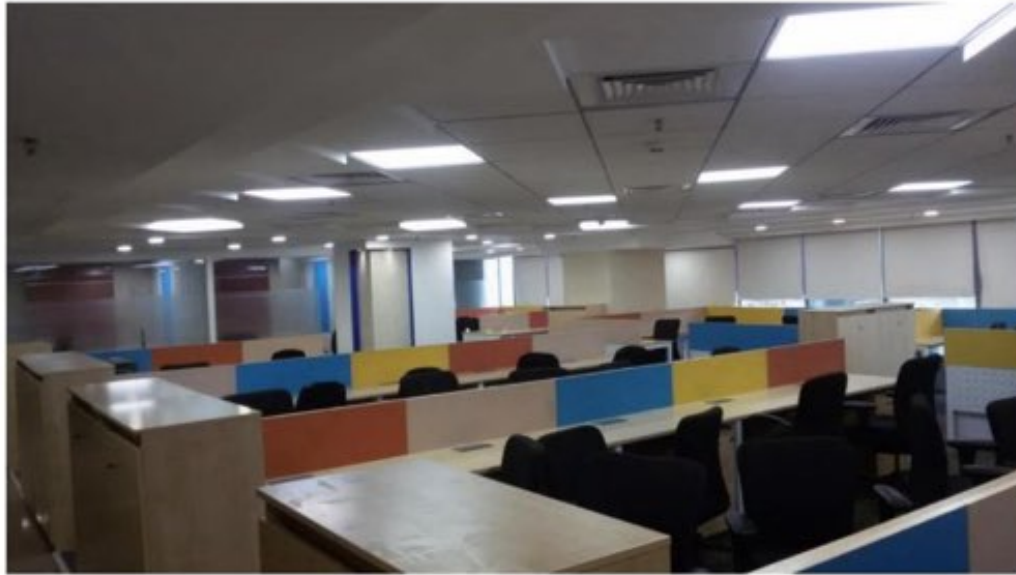


REBL BANK - START UP OFFICE (BANGALORE- KORAMANGALA)-COMPLETED SITE PHOTOS



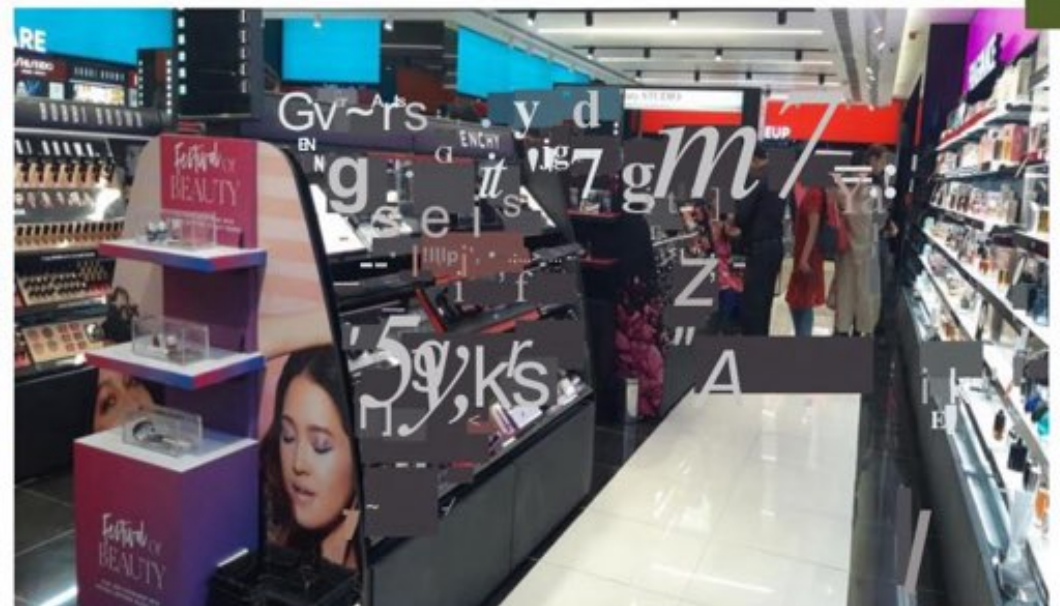
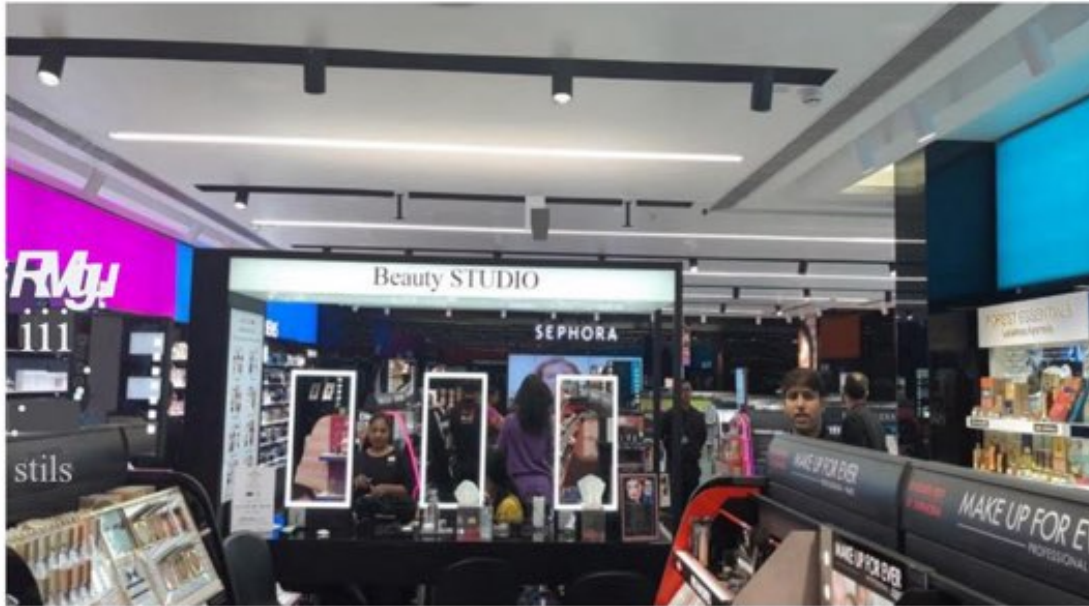
Selected Projects:

RBL BANK (BANGALORE-PRESTIGE TOWER (JRD FLOOR))- COMPLETED SITE PHOTOS



Selected Projects:

SEPHORA STORES (PAN INDIA) - SITE PHOTOS



Selected Projects:

THE COLLECTIVE STORES - PAN INDIA



Selected Projects:

THE COLLECTIVE STORES - PAN INDIA



HACKETT STORES- PAN INDIA



Selected Projects:

GIANI STORES- BANGALORE

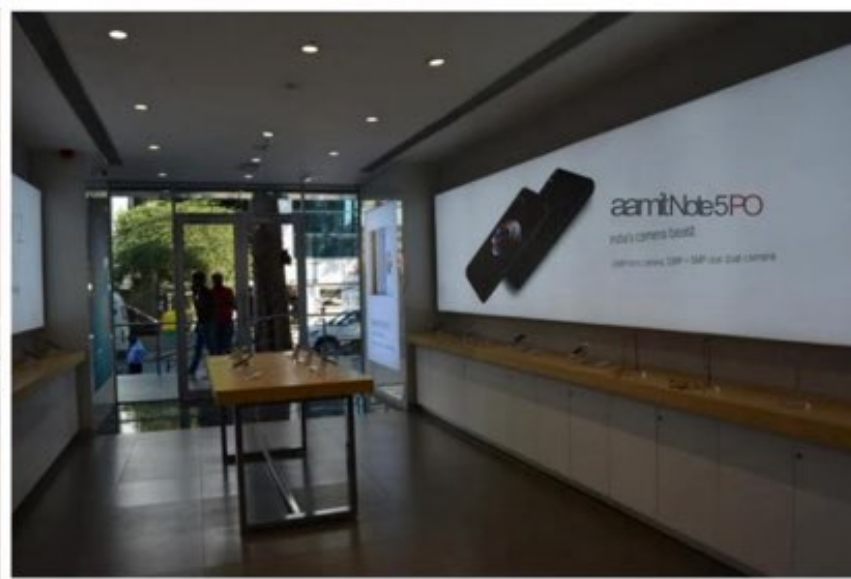
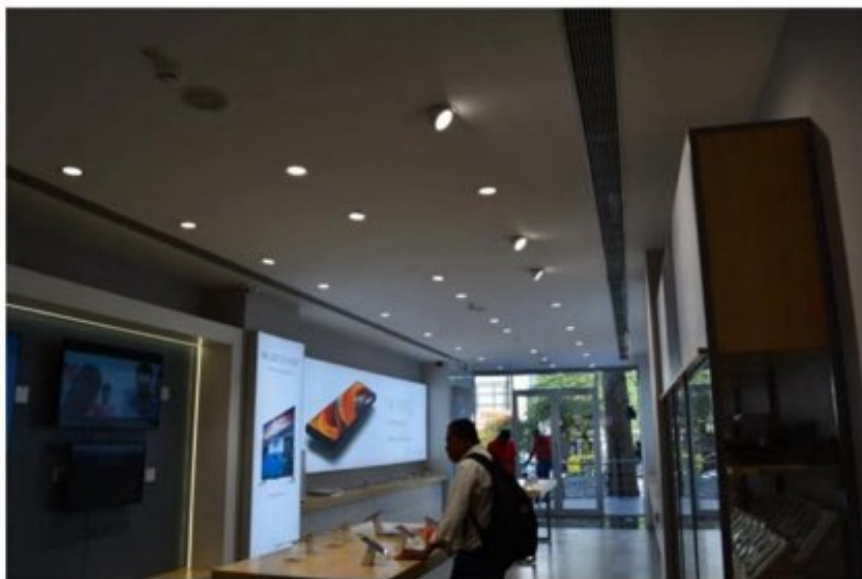
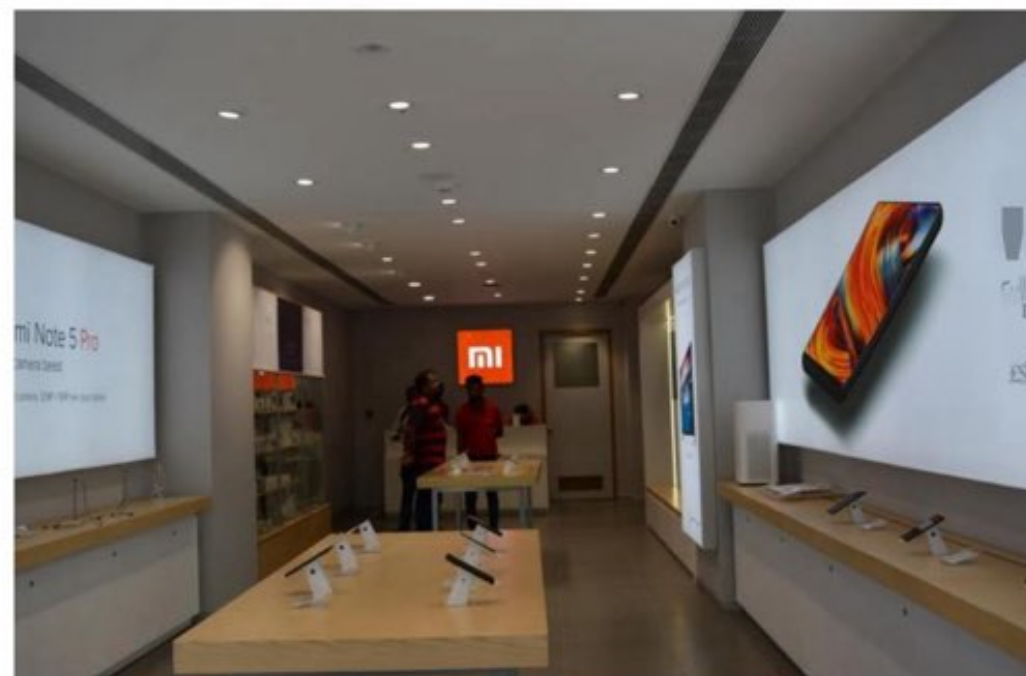


Selected Projects:

SAMSUNG STORES: ACROSS SOUTH INDIA (200 + STORES)



MI STORES - (SOUTH INDIA)

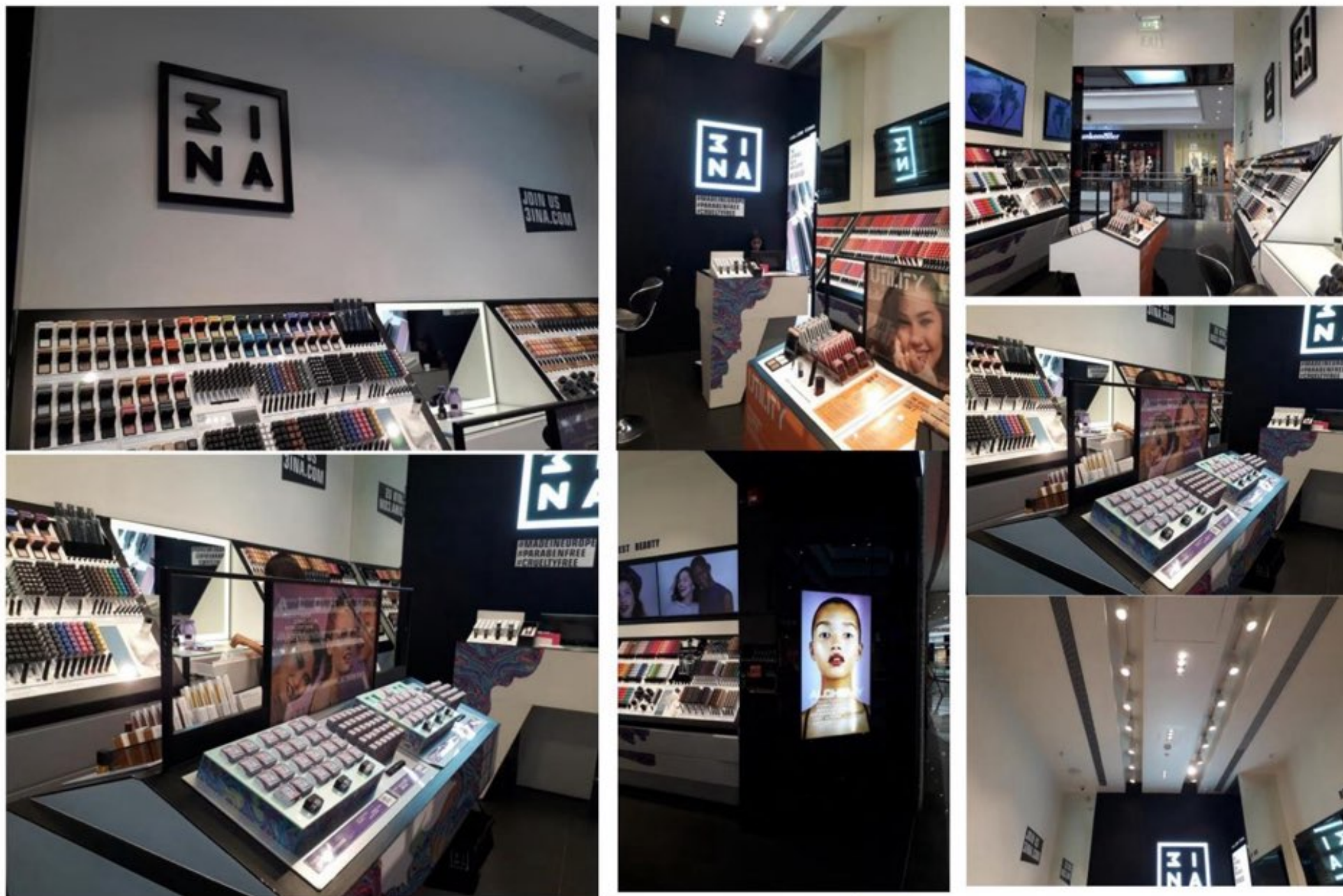


FOREVER NEW STORES- PAN INDIA



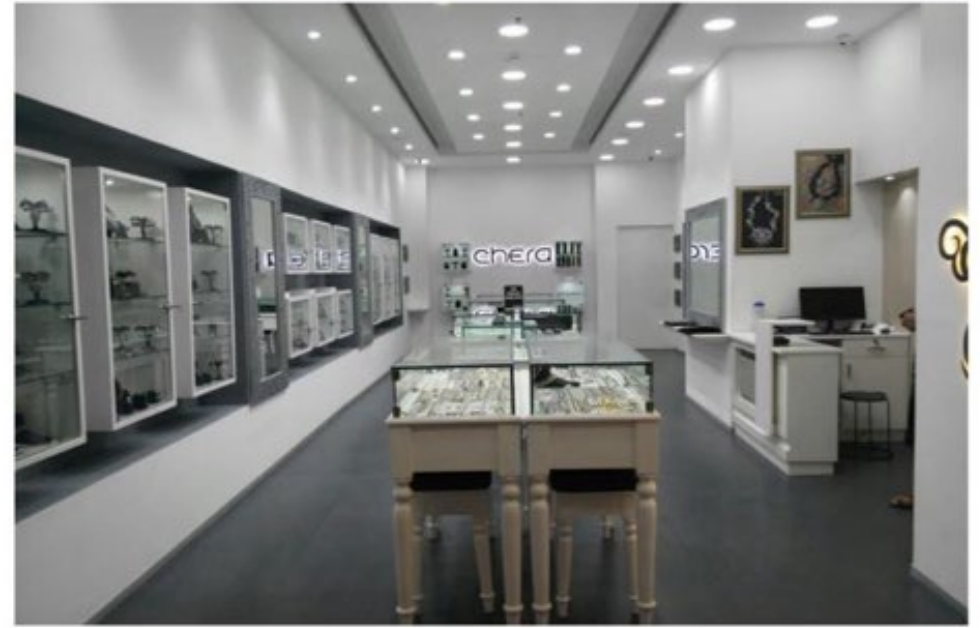
31NA STORES - PAN INDIA

Selected Projects:



Selected Projects:

CHERA SILVER JEWELLERY(PMC MALL - BENGALURU) - COMPLETED - SITE PHOTOS



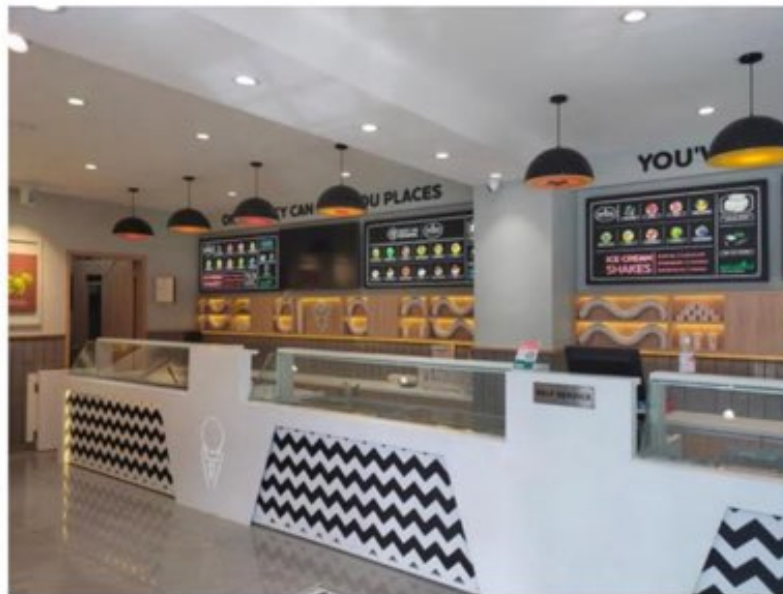
Selected Projects:

KIODA STORE- (BANGALORE- PMC MALL) - SITE PHOTOS



Selected Projects:

NATURALS (BENGALURU) - COMPLETED- SITE PHOTOS



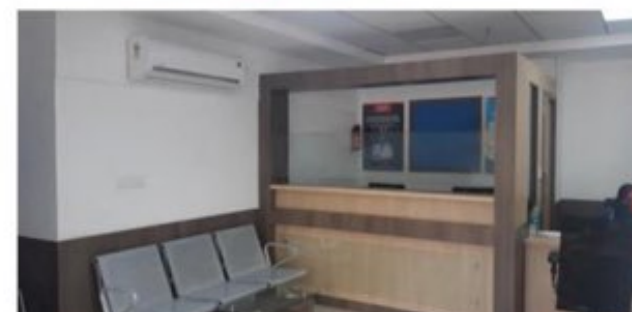
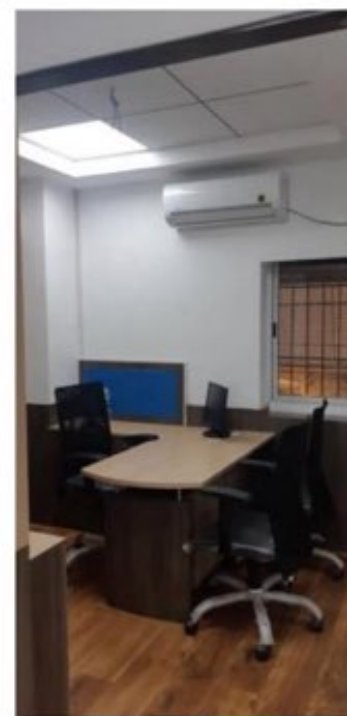
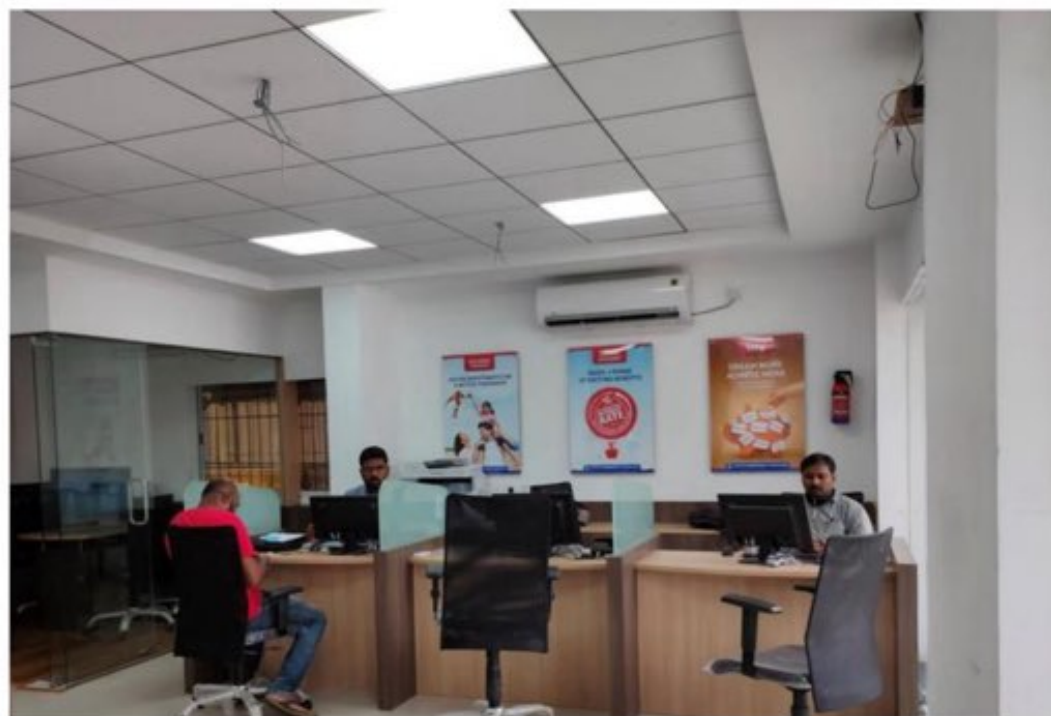
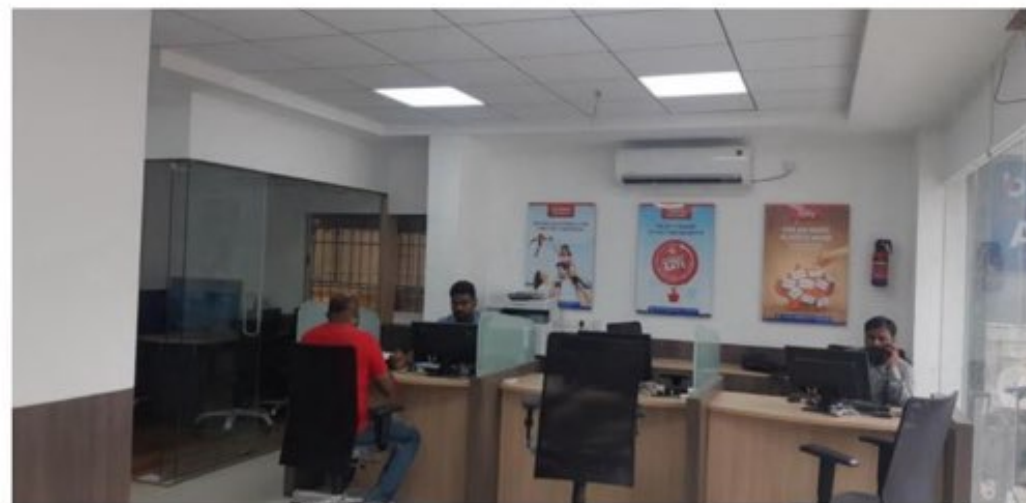
Selected Projects:

NATURALS (KUKKATAPALLY- HYDERABAD)- COMPLETED - SITE PHOTOS



Selected Projects:

RBL BANK (SOUTH INDIA) - SITE PHOTOS



Selected Projects:

VARIOUS APARTMENT INTERIORS, BENGALURU & OTHER PARTS OF KARNATAKA



Selected Projects:

VARIOUS APARTMENT INTERIORS, BENGALURU & OTHER PARTS OF KARNATAKA



Selected Projects:

RESIDENCE & APARTMENT DESIGNS- COMPLETED



Selected Projects:

RESIDENCE DESIGN - EVERLUSH BUILDERS - WORK IN PROGRESS



Selected Projects:

RESIDENCE DESIGNS- COMPLETED



Selected Projects:

RESIDENCE DESIGN FOR Mr. MALAYALAM - COMPLETED



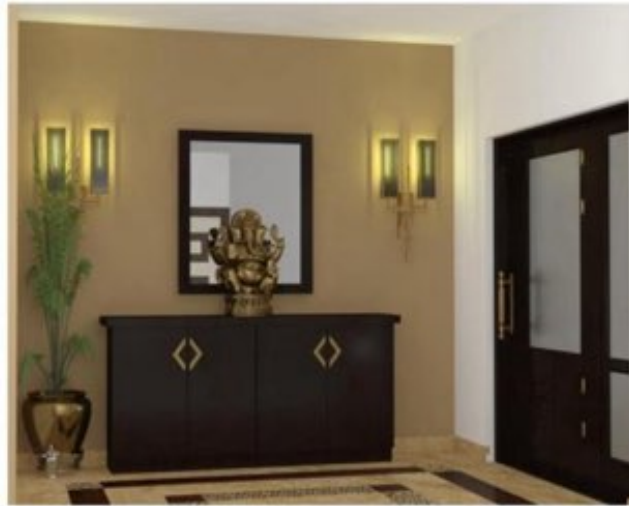
Selected Projects:

VILLA@ MADURAI EXTERIOR & INTERIOR DESIGN - COMPLETED



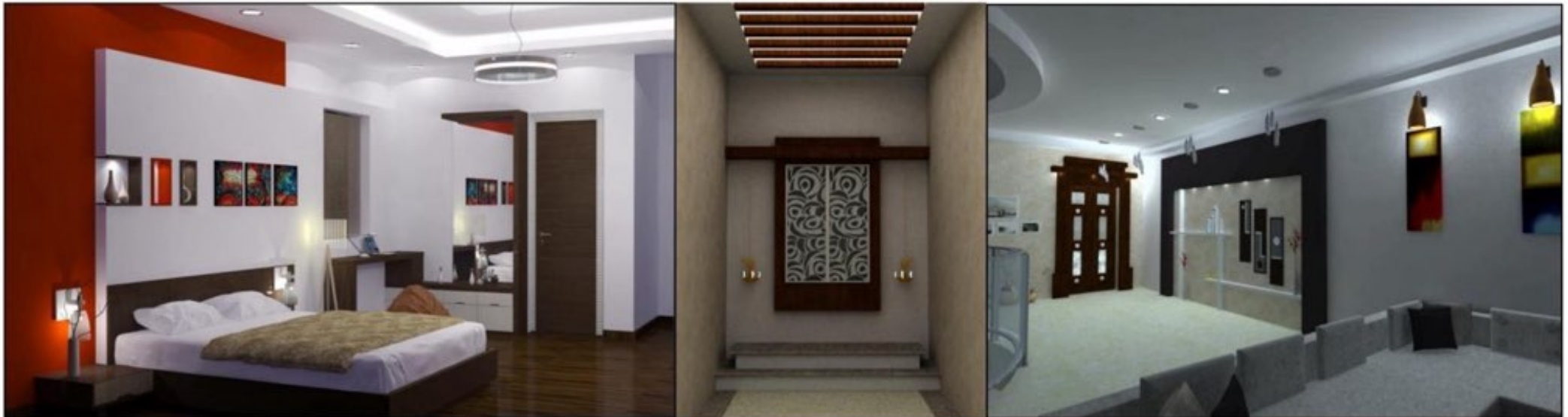
Selected Projects:

VILLA INTERIORS AT MADURAI - COMPLETED



Selected Projects:

VILLA INTERIORS AT MADURAI - COMPLETED



Selected Projects:

SILCON BUILDERS - APARTMENTS



Selected Projects:

CANSA HEIGHTS - COMPLETED



Selected Projects:

OVERSEAS PROJECTS - COMMERCIAL COMPLEX AT DJIBOUTI - COMPLETED



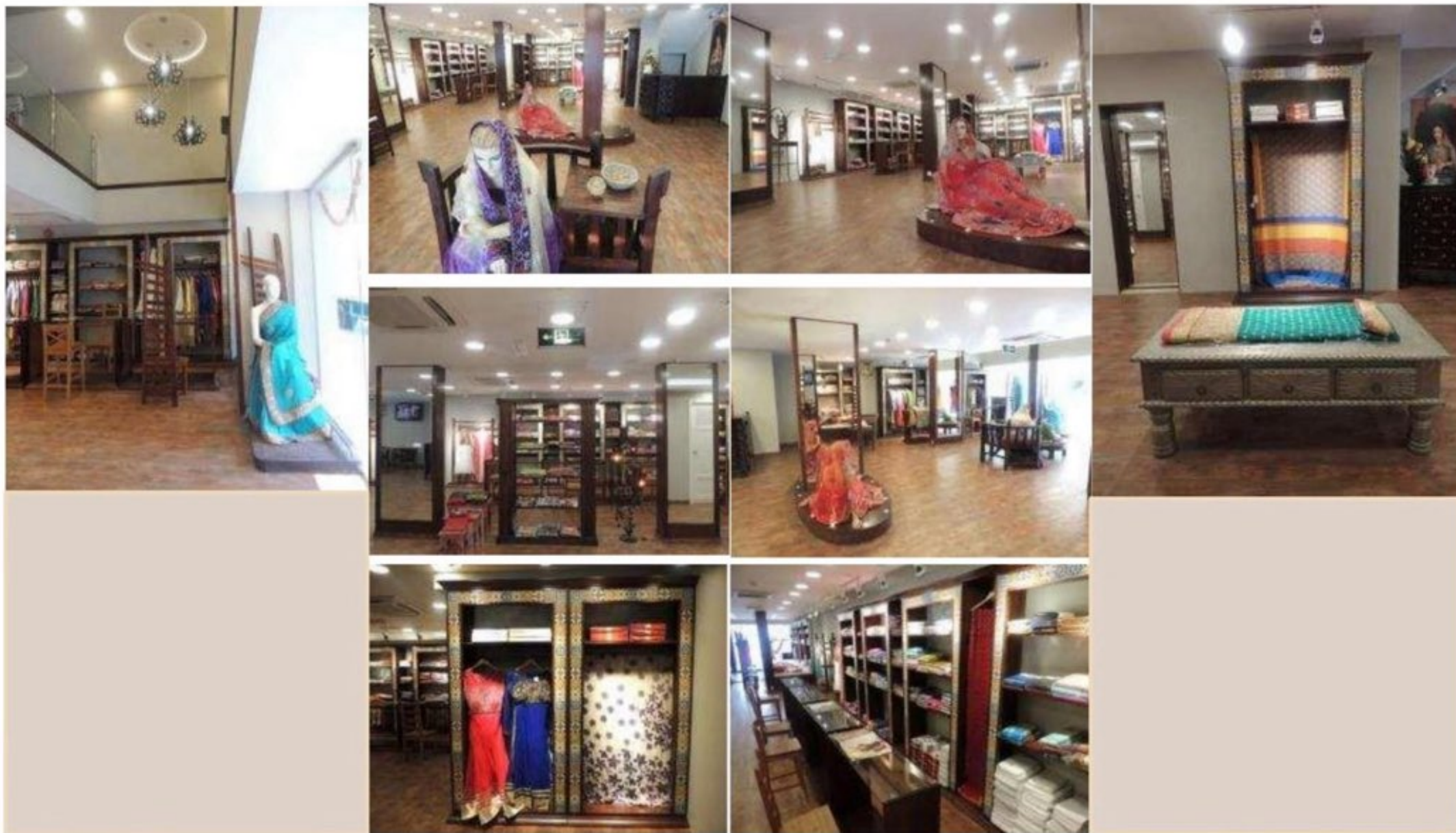
Selected Projects:

I-CARE CLINIC: DISCOVERY GARDEN - COMPLETED



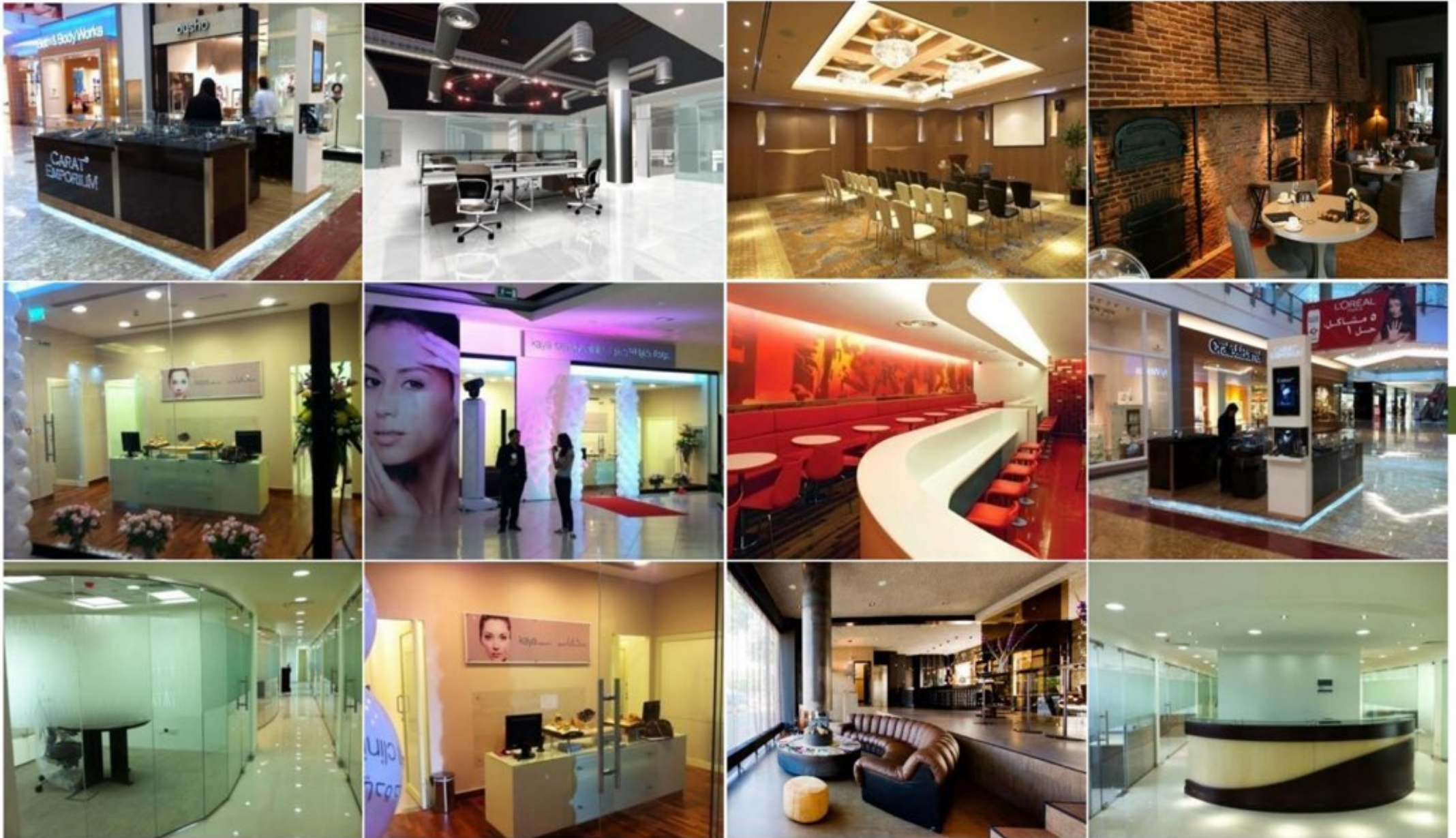
Selected Projects:

Overseas Projects - ROYAL PALACE AT BUR DUBAI - COMPLETED



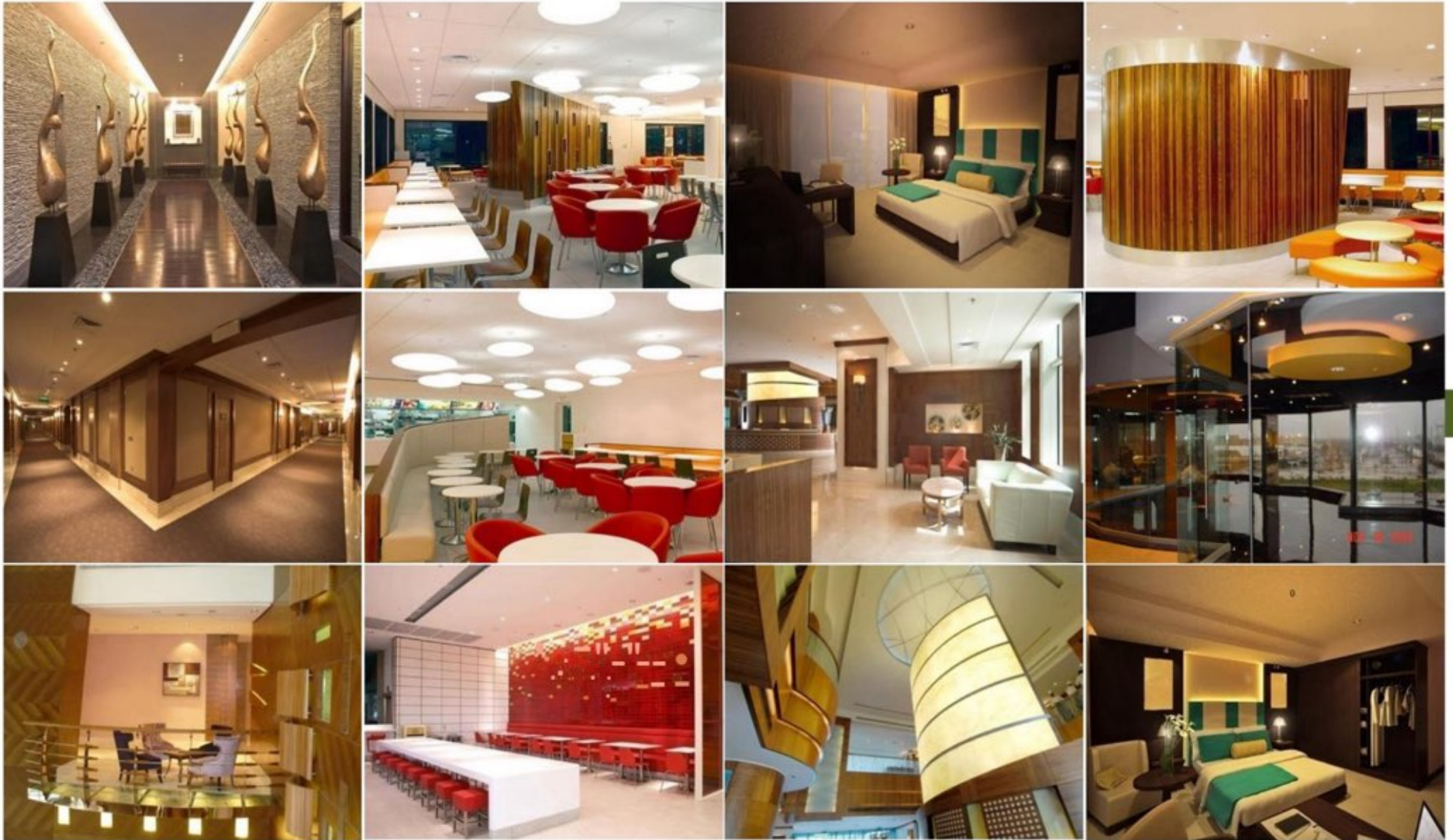
Selected Projects:

Overseas Projects



Selected Projects:

Overseas Projects



Selected Clientele:



Contact Us:



Rasme Engineering Pvt. Ltd
No. 3284, 3 Floor, V K Towers, Above
HDFC Bank, K.R Road, Banashankari 20th
Stage, Bangalore - 560 070
T: +080-26768448
E-Mail: info@rasmeconsultancy.com

| Dubai | **Bangalore** |



Rasi Consultancy
P.O. Box: 376872, Dubai
E-Mail: info@rasmeconsultancy.com

| **Dubai** | Bangalore |

* * We have upgraded as Rasme Engineering Pvt. Ltd from Rasme Consultancy

THANK YOU